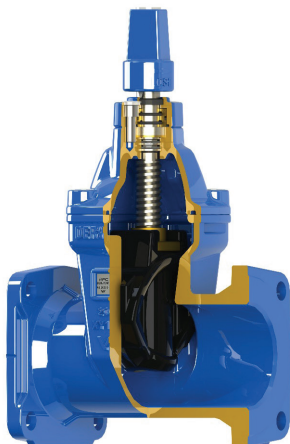


FEATURES

- Ductile Iron body and bonnet to AS 1831.
- Wedge is Ductile Iron AS 1831, fully encapsulated (Vulcanized)
- EPDM Rubber to AS1646 and AS681.1.
- Forged Stem: 431 Stainless Steel to ASTM A276, providing excellent corrosion and strength, reducing moving parts.
- Bolts are all 316 Stainless Steel to ASTM A276, hot melt encapsulated for superior corrosion resistance in harsh environments.
- Fusion Bonded Epoxy coated to AS/NZS 4158 provides the valve excellent corrosion protection.
- Valves are available in both Anticlockwise and Clockwise configuration. Valves are supplied with Key Cap as standard, Hand Wheel is optional.
- The wedge is designed with abrasion resistant nylon guides which reduce the required opening and closing torque through smooth operation.



Resilient Seated Gate Valve

Derwent International Resilient Seated Gate Valves, made in conjunction with AFC, are manufactured to AS/NZS 2638.2. The Gate Valves are light weight and applicable for water and waste water applications.



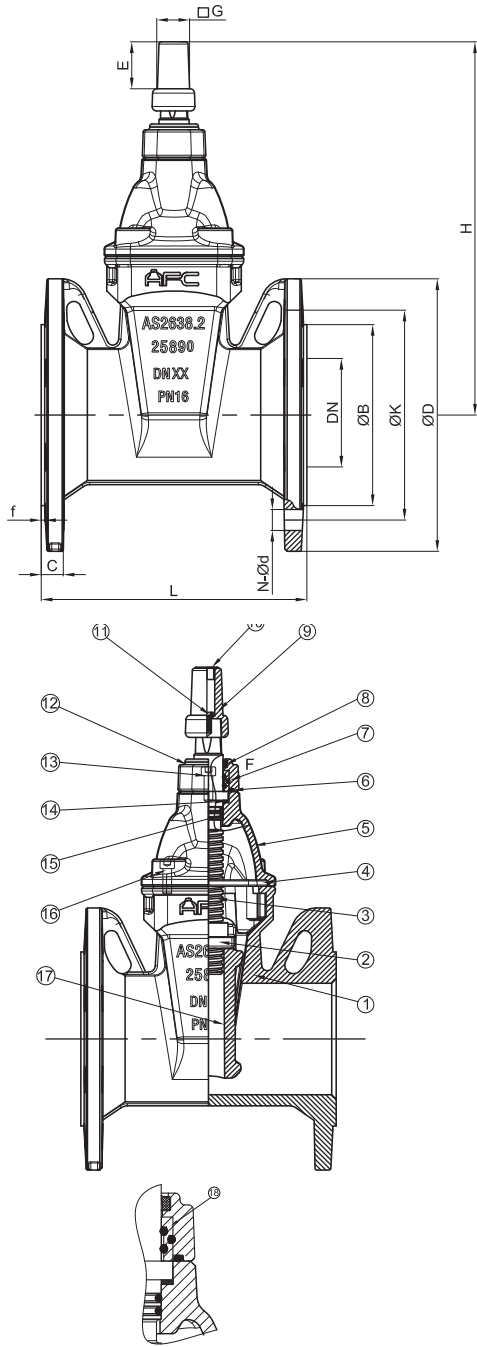
APPLICATIONS

The Derwent International Gate Valves are for use in Potable Water, Waste Water, Fire, Irrigation, Water Circulation and Heating and Cooling applications and are suitable for both above and below ground installation. or Gate Valve identification see back page of brochure.

TECHNICAL INFORMATION

SIZE RANGE:	DN 80-DN 600 (DN50 and DN65 also available not to AS/NZS2638.2)
ALLOWABLE OPERATING PRESSURE:	1600 kPa; 1.6 Mpa
MAXIMUM TEST PRESSURE:	2400 kPa, 2.4 Mpa
MAXIMUM TEMPERATURE:	40 Deg C
END CONNECTION:	Flanged to AS 4087 (Table E drilling also available for DN 150 and above) Socketed, Spigoted and Roll Grooved
CERTIFICATION:	SAI Global
WATERMARK LIC. NO.	25890
STANDARDS MARK LIC. NO.	25890
WSAA APPRAISAL NO.	PA1511

Flanged DN80 to DN400



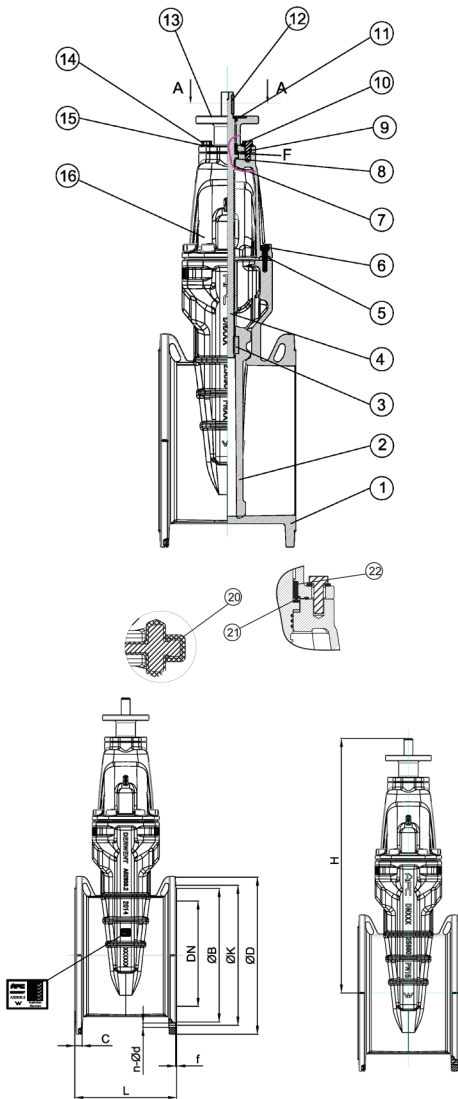
PART LIST

No	Parts Names	Material	Standard
1	Body	Ductile Iron	AS 1831
2	Wedge Nut	Brass	AS/NZS 1567
3	Stem	Stainless Steel	ASTM A276
4	Gasket	Rubber	AS 1646 and AS 681.1
5	Bonnet	Ductile Iron	AS 1831
6	O-ring	Rubber	AS 1646 and AS 681.1
7	O-ring	Rubber	AS 1646 and AS 681.1
8	Dust Wiper	Rubber	AS 1646 and AS 681.1
9	Cap	Ductile Iron	AS 1831
10	Cap Cover	Plastic	Commercial
11	Hex Bolt	Stainless Steel	ASTM A276
12	Gland	Ductile Iron	AS 1831
13	Hex Bolt	Stainless Steel	ASTM A276
14	Bush	Brass	AS/NZS 1568
15	O-ring	Rubber	AS 1646 and AS 681.1
16	Hex Bolt	Stainless Steel	ASTM A276
17	Wedge	Ductile Iron+Vulcanized Rubber (Nylon Guide)	AS 1831 + AS 1646 and AS 681.1
18	Retainer	Brass	AS/NZS 1568

DIMENSION:

DN	L	H	ØB	ØD	ØK	N-Ød	C	E	f	G	Unit: mm	
											Turns to close	Torque (N.M)
80	203	311	122	185	146	4-Ø18	18	50	3	35	7	40
100	229	340	154	215	178	4-Ø18	20	50	3	35	9	50
150	267	430	211	280	235	8-Ø18	23	50	3	35	13	75
200	292	550	268	335	292	8-Ø18	23	50	3	35	17	140
225	305	628	300	370	324	8-Ø18	24	57	3	35	21	140
250	330	628	328	405	356	8-Ø22	24	57	3	35	21	140
300	356	703	378	455	406	12-Ø22	30	57	4	35	25	150
375	381	920	463	550	495	12-Ø26	33	57	4	35	34	300
400	406	920	489	580	521	12-Ø26	33	57	4	35	34	300

Resilient Seated Gate Valves - Flanged DN450 to DN600

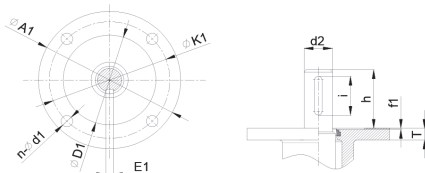


No	Parts Names	Material	Standard
1	Body	Ductile Iron	AS 1831
2	Wedge	Ductile Iron+Vulcanized Rubber (nylon guide)	AS 1831+AS 1646 and AS 681.1
3	Wedge Nut	Bronze	AS/NZS 1567
4	Stem	Stainless Steel	ASTM A276 431SS
5	Gasket	Rubber	AS 1646 and AS 681.1
6	Hex Bolt	Stainless Steel	ASTM A276
7	O-ring	Rubber	AS 1646 and AS 681.1
8	Bush	Brass	AS/NZS 1568
9	O-ring	Rubber	AS 1646 and AS 681.1
10	O-ring	Rubber	AS 1646 and AS 681.1
11	Dust Wiper	Rubber	AS 1646 and AS 681.1
12	Key	Carbon Steel	Commercial
13	Gland	Ductile Iron	AS 1831
14	Hex Bolt	Stainless Steel	ASTM A276
15	Washer	Stainless Steel	ASTM A276
16	Bonnet	Ductile Iron	AS 1831
17	Cap	Ductile Iron	AS 1831
18	Cap Cover	Plastic	Commercial
19	Hex Bolt	Stainless Steel	ASTM A276
20	Guide	Plastic	
21	Bearing	Roller Bearing	
22	Retainer	Brass	AS/NZS 1568
20	Wedge	Ductile Iron+Vulcanized Rubber (Nylon Guide)	AS 1831 + AS 1646 and AS 681.1

DIMENSION: (TURNS AND TORQUE RELATE TO KEY CAP / HAND WHEEL)

UNIT: MM

DN	L	H	H1	ØB	ØD	ØK	N-Ød	C	E	f	G	Turns to close	Seating Torque (N.M)	Input Torque (N.M)	Weight (KG)
450	432	1032	1110	552	640	584	12-Ø26	33	57	4	35	38	400	450	384
500	457	1150	1230	609	705	641	16-Ø26	35	57	4	35	42	450	500	483
600	508	1290	1370	720	825	756	16-Ø30	42	57	5	35	50	550	600	684

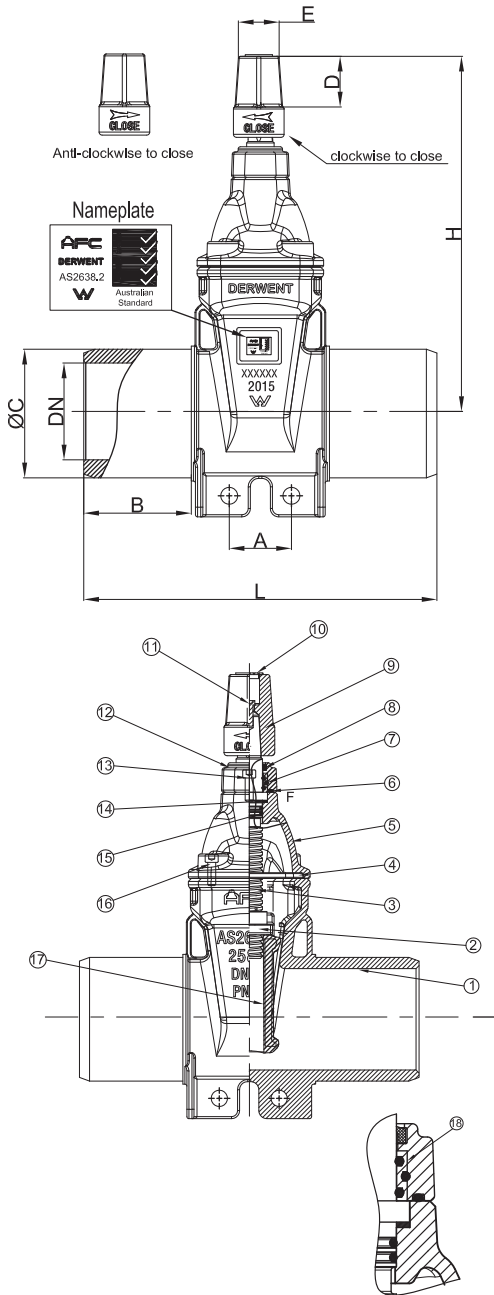


TOP FLANGE (GLAND) STANDARD ISO 5210 - NOTE TURNS AND TORQUE FOR GEAR BOX OPERATION:

DN	Flange Type	ØA1	ØK1	ØD1	n-Ød1	E1	d2	i	h	f1	T	Turns to close	Seating Torque (N.M)	Input Torque (N.M)
450	F14	175	140	100	4-Ø18	8	30	45	45	4	22	38	400	450
500	F16	210	165	130	4-Ø22	12	40	60	81	5	25	42	450	500
600	F16	210	165	130	4-Ø22	12	40	60	81	5	25	50	550	600

Safety Factor for Actuator Sizing is not included, please allow additional 20%.

Resilient Seated Gate Valves - Spigot DN80 to DN300



PART LIST

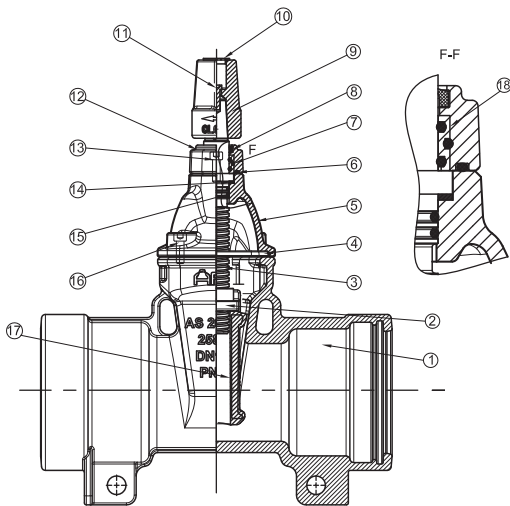
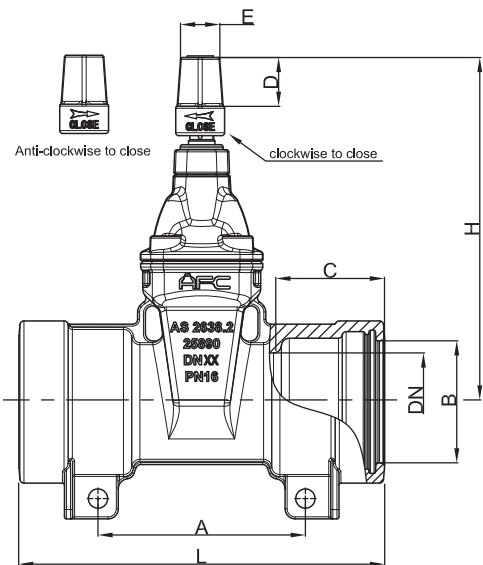
No	Parts Names	Material	Standard
1	Body	Ductile Iron	AS 1831
2	Wedge Nut	Brass	AS/NZS 1567
3	Stem	Stainless Steel	ASTM A276 431SS
4	Gasket	Rubber	AS 1646 and AS 681.1
5	Bonnet	Ductile Iron	AS 1831
6	O-ring	Rubber	AS 1646 and AS 681.1
7	O-ring	Rubber	AS 1646 and AS 681.1
8	Dust Wiper	Rubber	AS 1646 and AS 681.1
9	Cap	Ductile Iron	AS 1831
10	Cap Cover	Plastic	
11	Hex Bolt	Stainless Steel	ASTM A276
12	Gland	Ductile Iron	AS 1831
13	Hex Bolt	Stainless Steel	ASTM A276
14	Bush	Brass	AS/NZS 1568
15	O-ring	Rubber	AS 1646 and AS 681.1
16	Hex Bolt	Stainless Steel	ASTM A276
17	Wedge	Ductile Iron + Vulcanized Rubber	AS 1831 + AS 1646 and AS 681.1
18	Retainer	Brass	AS/NZS 1568

DIMENSION:

UNIT: MM

DN	L	H	B	C (+1/-2)	D	E	Turns to close	Torque (N.M)
80	278	311	89	96	50	35	7	40
100	335	340	102	122	50	35	9	50
150	360	430	102	177	50	35	13	75
200	430	550	115	232	57	35	17	140
225	480	628	115	259	57	35	21	140
250	480	628	115	286	57	35	21	140
300	510	703	115	345	57	35	25	150

Resilient Seated Gate Valves - Socket DN80 to DN300



Images DN80-DN150

PART LIST

No	Parts Names	Material	Standard
1	Body	Ductile Iron	AS 1831
2	Wedge Nut	Brass	AS/NZS 1567
3	Stem	Stainless Steel	ASTM A276 431SS
4	Gasket	Rubber	AS 1646 and AS 681.1
5	Bonnet	Ductile Iron	AS 1831
6	O-ring	Rubber	AS 1646 and AS 681.1
7	O-ring	Rubber	AS 1646 and AS 681.1
8	Dust Wiper	Rubber	AS 1646 and AS 681.1
9	Cap	Ductile Iron	AS 1831
10	Cap Cover	Plastic	
11	Hex Bolt	Stainless Steel	ASTM A276
12	Gland	Ductile Iron	AS 1831
13	Hex Bolt	Stainless Steel	ASTM A276
14	Bush	Brass	AS/NZS 1568
15	O-ring	Rubber	AS 1646 and AS 681.1
16	Hex Bolt	Stainless Steel	ASTM A276
17	Wedge	Ductile Iron + Vulcanized Rubber	AS 1831 + AS 1646 and AS 681.1
18	Retainer	Brass	AS/NZS 1568

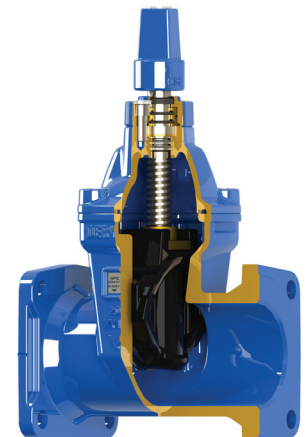
DIMENSION:

UNIT: MM

DN	L	H	A	B	C	D	E	Turns to close	Torque (N.M)
80	310	311	65	98.3 ±1.0	102	50	35	7	40
100	360	340	90	124.7 ±1.0	107	50	35	9	50
150	407	430	115	180.1 ±1.0	118	50	35	13	75
200	505	550	140	235.2 ±1.3	138	57	35	17	140
225	520	628	150	262.1 ±1.3	144	57	35	21	140
250	520	628	150	289.0 ±1.3	144	57	35	21	140
300	590	703	200	348.4 ±1.3	155	57	35	25	150

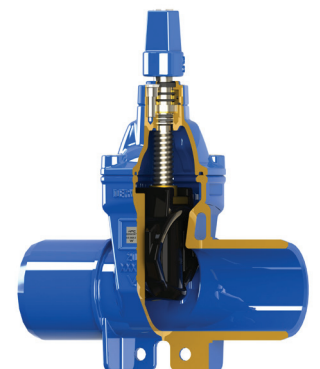
Product Guide - Flanged Valves

Item	Size	Code	Description
1	80	VFF80ACC	80mm FL/FL Gate Valve ACC
2	80	VFF80CC	80mm FL/FL Gate Valve CC
3	100	VFF100ACC	100mm FL/FL Gate Valve ACC
4	100	VFF100CC	100mm FL/FL Gate Valve CC
5	150	VFF150ACC	150mm FL/FL Gate Valve ACC
6	150	VFF150CC	150mm FL/FL Gate Valve CC
7	200	VFF200ACC	200mm FL/FL Gate Valve ACC
8	200	VFF200CC	200mm FL/FL Gate Valve CC
9	225	VFF225ACC	225mm FL/FL Gate Valve ACC
10	225	VFF225CC	225mm FL/FL Gate Valve CC
11	250	VFF250ACC	250mm FL/FL Gate Valve ACC
12	250	VFF250CC	250mm FL/FL Gate Valve CC
13	300	VFF300ACC	300mm FL/FL Gate Valve ACC
14	300	VFF300CC	300mm FL/FL Gate Valve CC
15	375	VFF375ACC	375mm FL/FL Gate Valve ACC
16	375	VFF375CC	375mm FL/FL Gate Valve CC
17	400	VFF400ACC	400mm FL/FL Gate Valve ACC
18	400	VFF400CC	400mm FL/FL Gate Valve CC
19	450	VFF450ACC	450mm FL/FL Gate Valve ACC
20	450	VFF450CC	450mm FL/FL Gate Valve CC
21	500	VFF500ACC	500mm FL/FL Gate Valve ACC
22	500	VFF500CC	500mm FL/FL Gate Valve CC
23	600	VFF600ACC	600mm FL/FL Gate Valve ACC
24	600	VFF600CC	600mm FL/FL Gate Valve CC



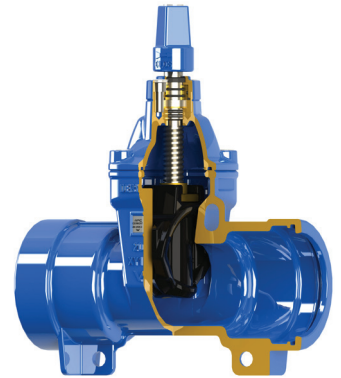
Product Guide - Socket Valves

Item	Size	Code	Description
1	80	VSS80ACC	80mm SPIG/SPIG Gate Valve ACC
2	80	VSS80CC	80mm SPIG/SPIG Gate Valve CC
3	100	VSS100ACC	100mm SPIG/SPIG Gate Valve ACC
4	100	VSS100CC	100mm SPIG/SPIG Gate Valve CC
5	150	VSS150ACC	150mm SPIG/SPIG Gate Valve ACC
6	150	VSS150CC	150mm SPIG/SPIG Gate Valve CC
7	200	VSS200ACC	200mm SPIG/SPIG Gate Valve ACC
8	200	VSS200CC	200mm SPIG/SPIG Gate Valve CC
9	225	VSS225ACC	225mm SPIG/SPIG Gate Valve ACC
10	225	VSS225CC	225mm SPIG/SPIG Gate Valve CC
11	250	VSS250ACC	250mm SPIG/SPIG Gate Valve ACC
12	250	VSS250CC	250mm SPIG/SPIG Gate Valve CC
13	300	VSS300ACC	300mm SPIG/SPIG Gate Valve ACC
14	300	VSS300CC	300mm SPIG/SPIG Gate Valve CC



Product Guide - Socket Valves

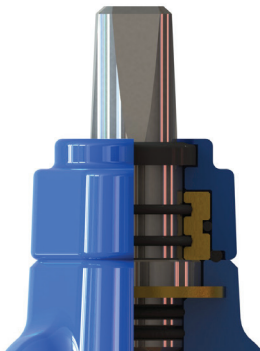
Item	Size	Code	Description
1	80	VSOSO80ACC	80mm SOC/SOC Gate Valve ACC
2	80	VSOSO80CC	80mm SOC/SOC Gate Valve CC
3	100	VSOSO100ACC	100mm SOC/SOC Gate Valve ACC
4	100	VSOSO100CC	100mm SOC/SOC Gate Valve CC
5	150	VSOSO150ACC	150mm SOC/SOC Gate Valve ACC
6	150	VSOSO150CC	150mm SOC/SOC Gate Valve CC
7	200	VSOSO200ACC	200mm SOC/SOC Gate Valve ACC
8	200	VSOSO200CC	200mm SOC/SOC Gate Valve CC
9	225	VSOSO225ACC	225mm SOC/SOC Gate Valve ACC
10	225	VSOSO225CC	225mm SOC/SOC Gate Valve CC
11	250	VSOSO250ACC	250mm SOC/SOC Gate Valve ACC
12	250	VSOSO250CC	250mm SOC/SOC Gate Valve CC
13	300	VSOSO300ACC	300mm SOC/SOC Gate Valve ACC
14	300	VSOSO300CC	300mm SOC/SOC Gate Valve CC



Anchor Legs - Socket and Spigot Valves



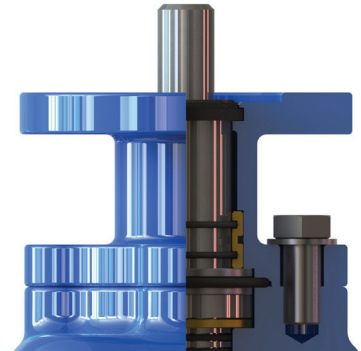
Gland Design



DN80-DN150



DN200-DN400



DN450-DN600

PRODUCT APPROVALS AND RATINGS

RESILIENT SEAT GATE VALVES TO AS/NZS 2638.2

STANDARDS MARK / WATERMARK LICENCE No. 25890 SAI GLOBAL

WSAA Appraisal No. PA1511

SUITABLE FOR POTABLE (BLUE), RECYCLED (LILAC) WATER AND WASTE WATER

Maximum Operating Pressure: 1600 KPA
Maximum Test Pressure: 2400 KPA
Maximum Temperature 40 Deg C

Installation: Suitable for above or below ground and shall be in accordance with the relevant regulatory codes and local authority requirements.
The system should be pressure tested before backfilling or concealment.

Gate Valve Identification:



Blue Cap - White plug
Water ACC Close



Red Cap - Red Plug -
Water CC Close



Lilac Cap - White plug
Recycled Water
ACC Close



Lilac Cap - Red Plug
Recycled Water
CC Close

Distributed By:



Derwent Industries Pty Ltd
P.O.Box 266
Malvern, Vic, 3144
Web: www.derwentindustries.com.au

