

PE Couplings & Adaptors

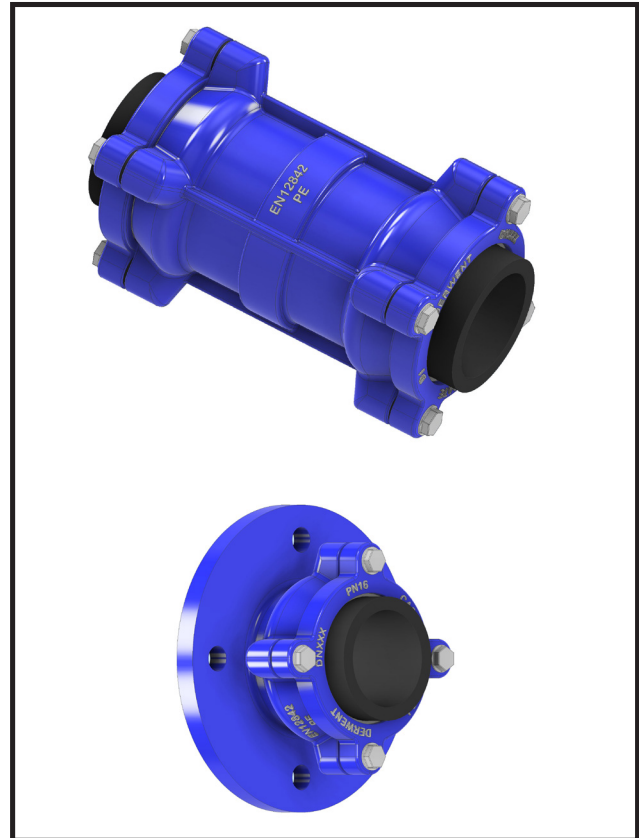
Derwent Industries supplies a range of PE products for HDPE to suit the requirements of Water, Waste Water, Irrigation & Mining. The range of products provides the industry with PE solutions.

Features:

- Body: Ductile Iron
GGG450-10
- Bolts: 316 Stainless Steel
- Lip Seal: EPDM
- Spacer Bush: PE
- Gripper Ring: Brass Ms58
- Flange: Ductile Iron
GGG450-10
- Coating: Akzo Nobel Fusion
Bonded Epoxy coated
to AS/NZS 4158.

Applications:

The Derwent Industries PE Flange Adaptors are for use in Potable Water, Waste Water, Fire, Irrigation and Water Circulation applications and are suitable for both above and below ground installation.



Installation:

- Ensure coupling / adaptor is the correct size for the host pipe.
- If using PE pipes with thin walls rated (>SDR 21) and low internal pressure, we recommend the use of a support liner.
- Ensure pipe has a chamfered end prior to fitting to reduce the chance of seal damage and aid in inserting the pipe.
- Apply an approved pipe lubricant to the pipe end to assist with fitting.
- Push the pipe end into the end of the socket. (Refer to insert depth details)
- Tighten the locking ring bolts evenly around the fitting ensuring the ring is tight on the stop

Technical Information:

Size range:

Flange Adaptors: DN 90 - DN 315
 Couplings: DN 63 - DN 315

Allowable Operating Pressure: 1600 kPa, 1.6 Mpa

Maximum Test Pressure: 2400 kPa, 2.4 Mpa

Certification: SAI Global

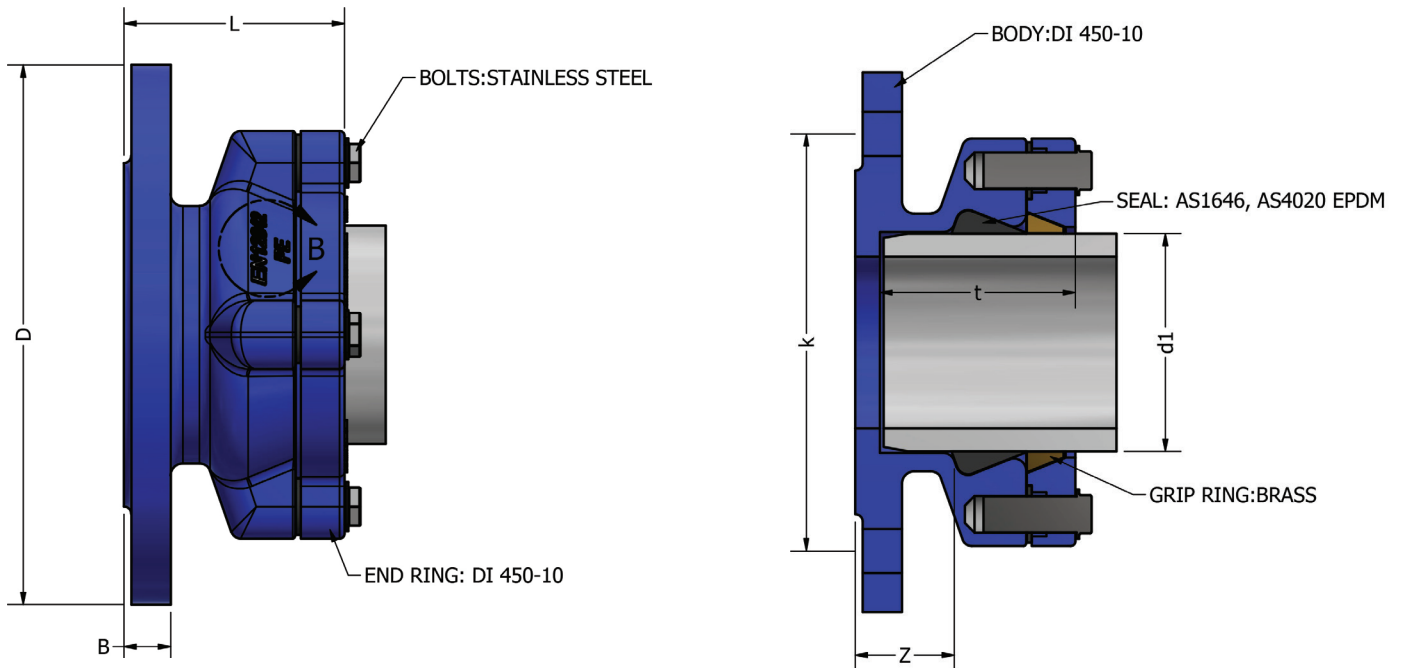
WSAA: PA 2106

Note:

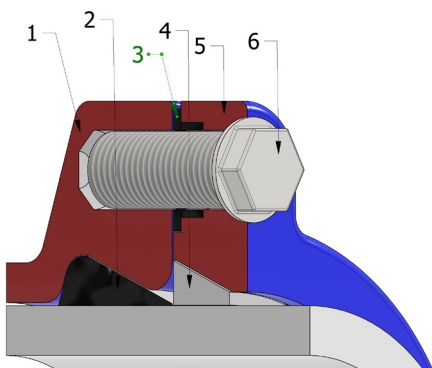
Alternate Flange adaptors and Couplings are available DN355 - DN630. Please contact us for details.

PE - Flange Adaptors

Flange Adaptor Dimensions:



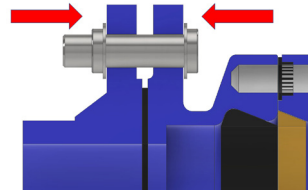
Size	Pipe	Dimensions						Min Wall Thickness	Weight kg
DN	d1	D	k	b	l	t	Z		
80	90	200	160	19	95	85	43	5	5.5
100	110	220	180	19	95	85	43	5	6.2
100	125	220	180	19	97	87	46	5	7.0
150	160	285	240	19	115	105	59	6	10.5
150	180	285	240	19	125	115	68	6	11.6
200	200	340	295	20	135	125	78	7	18.0
200	225	340	295	20	138	128	83	7	16.0
250	250	400	350	22	155	145	104	8	22.0
250	280	400	350	22	158	148	104	8	29.0
300	315	455	400	24.5	185	175	126	11	44.0



No	Parts Names	Material
1	Body	DI 450-10
2	Lip Seal	EPDM to AS1646, AS 4020
3	Spacer Bush	PE
4	Grip Ring	Brass
5	Flange	DI 450-10
6	Bolts	316 SS
7	Coating	AS4158

PE Flange Adaptors - Assembly Instructions

STEP 1:
Attach the Flange adaptor coupling to the mating flange of the associated fitting.

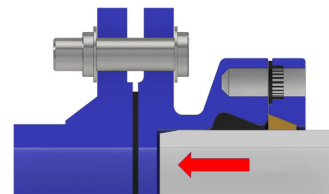


STEP 2:
Chamfer the joining end of the PE Pipe. Please follow pipe manufacturers recommendations for pipe chamfer. Alternatively the following table and guide is provided as a recommended pipe chamfer size.

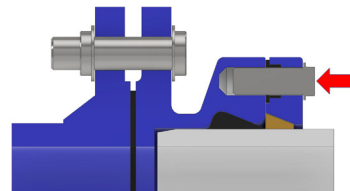
DN	A	B
63-140	2.5 mm	10 mm
160-180	4 mm	16 mm
200-225	5 mm	20 mm
250-315	7 mm	25 mm



STEP 3:
Insert the chamfered pipe end into the socket of the PE Flange Adaptor. For PE pipes with thin walls rated (>SDR 21) and low internal pressure, it is recommended that a support liner is used.

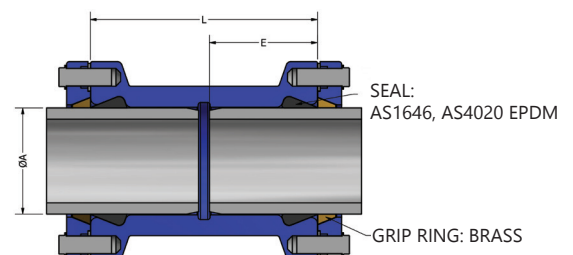
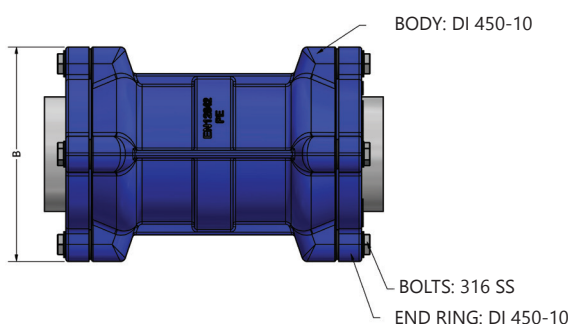


STEP 4:
After the pipe has been correctly inserted into the socket, tighten the bolts on the lock ring in a crosswise pattern until the ring is tight against the bushes.



PE - Couplings

Pipe	L	E	B	Min Wall Thickness	Weight KG
63	171	80	124	5	3.2
75	175	82	138	5	4.0
90	181	85	152	5	5.4
110	181	85	172	6	6.4
125	185	87	193	6	7.8
160	221	105	236	6	12.0
180	241	113	258	6	14.5
200	261	125	284	7	21.5
225	265	128	314	7	26.0
250	300	145	347	8	33.0



Ductile Iron Flanged Offtake (Uniclamp)

The Derwent Industries Ductile Iron Flanged Offtakes are used for under pressure tapping on pipelines and can be affixed at desired points where tapping is required. The couplings have been designed in conjunction with pipeline tappers for ease of installation. The use of bracing lugs running between the bolt holes, allows the tapper to hold the two halves of the coupling together whilst inserting bolts and tensioning. Please refer to your local water authority to ensure approved for use in your region.

Features & Configurations:

- Material: Ductile Iron Body with 316 SS Bolts
- Coating: FBE, Plascoat or Rilsan/ Nylon 11

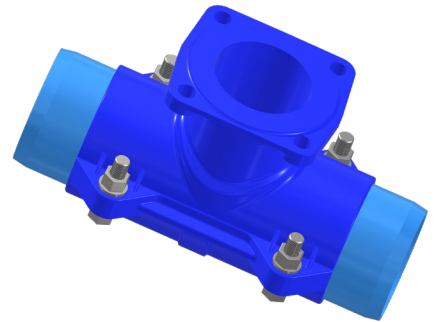
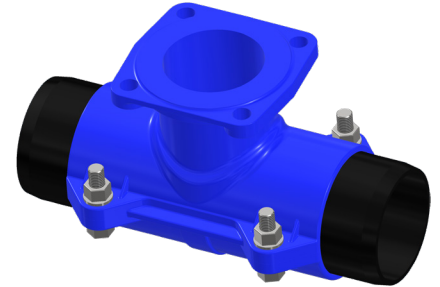
PE Sizes: DN 125 and DN 180

Series 2 Sizes: DN 100 (suit OD 122) and
DN 150 (suit OD 177)

Offtakes: DN 80, 100 & 150

Details:

- Two parts for ease of assembly.
- Bolt Locks/Lugs to support bolts tensioning.
- Bracing Lugs to assist installer in holding halves together whilst bolting up.
- Series 2 please specify Ductile Iron or PVC.



SUITABLE FOR POTABLE (BLUE), RECYCLED (LILAC) WATER AND WASTE WATER

Allowable Operating Pressure: 1600 kPa, 1.6 Mpa

Maximum Test Pressure: 2400 kPa, 2.4 Mpa

Certification: SAI Global

- PE - Product License No. SMK26385 WaterMark License No. WMK26385 WSAA No. PA1828
- S2 - Product License No. SMK26386 WaterMark License No. WMK26386 WSAA No. PA 2025

Installation:

Suitable for above or below ground and shall be in accordance with the relevant regulatory codes and local authority requirements. The system should be pressure tested before backfilling or concealment.



Web: www.derwentindustries.com.au

Australia: sales@derwentindustries.com.au
New Zealand: sales@derwentindustries.co.nz