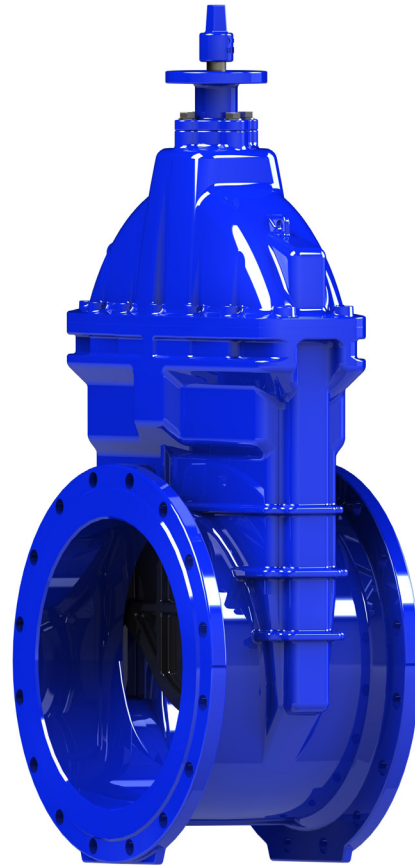


## Resilient Seated Gate Valve (RSGV)

**D**erwent Industries Resilient Seated Gate Valves DN750 - 1200. The Gate Valves are light weight and applicable for water & waste water applications.

### Features:

- Ductile Iron body and bonnet to AS 1831:500-7
- Wedge: Ductile Iron (AS 1831) + Vulcanized Rubber with Nylon Guide
- Forged Stem: 431 Stainless Steel to ASTM A276, providing excellent corrosion and strength, reducing moving parts.
- Bolts where applicable are hot melt encapsulated for superior corrosion resistance in harsh environments.
- Fusion Bonded Epoxy coated to AS/NZS 4158 provides the valve excellent corrosion protection.
- Valves are available in both Anticlockwise and Clockwise configuration. Valves are supplied with Key Cap as standard, Hand Wheel and gear boxes are optional.
- The wedge is designed with abrasion resistant nylon guides which reduce the required opening and closing torque through smooth operation.



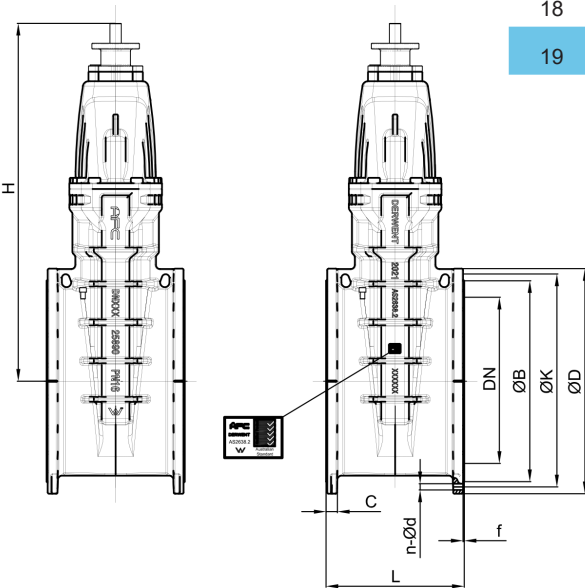
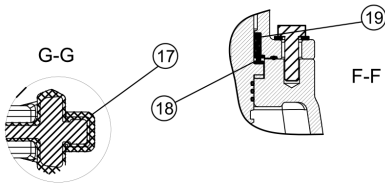
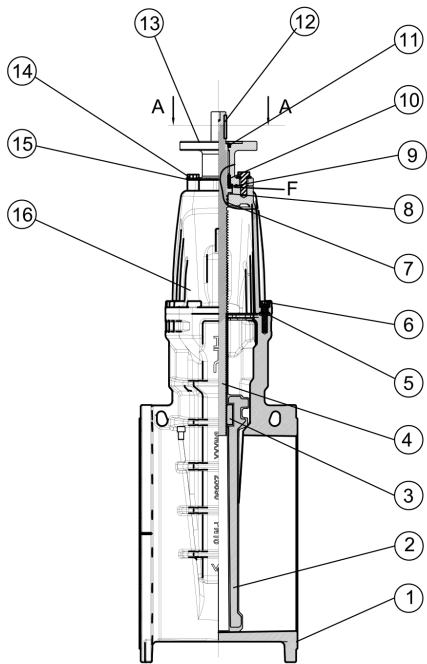
### Applications:

The Derwent Industries RSGV are for use in Potable Water, Waste Water, Fire, Irrigation, Water Circulation and Heating and Cooling applications and are suitable for both above and below ground installation where a RSGV is required.

### Technical Information:

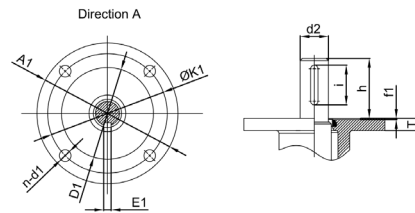
<b>Size range:</b> Flanged	DN 750 - 1200
<b>Allowable Operating Pressure:</b>	1600 kPa; 1.6 Mpa
<b>Maximum Test Pressure:</b>	2400 kPa, 2.4 Mpa
<b>Maximum Temperature:</b>	40 Deg C
<b>End Connection:</b> (Other drillings available)	Flanged to AS4087

# Resilient Seated Gate Valves - Flanged DN750



## Part List

No	Parts Names	Material	Standard
1	Body	Ductile Iron	AS 1831
2	Wedge	Ductile Iron+ Vulcanised Rubber (Nylon Guide)	AS 1831 + AS1646 & AS 681.1
3	Wedge Nut	Bronze	AS/NZS 1567
4	Stem	Stainless Steel	ASTM A276
5	Gasket	Rubber	AS 1646 & AS 681.1
6	In Hex Bolt	Stainless Steel	ASTM A276
7	O-Ring	Rubber	AS 1646 & AS 681.1
8	Bushing	Brass	AS/NZS 1568
9	O-Ring	Rubber	AS 1646 & AS 681.1
10	O-Ring	Rubber	AS 1646 & AS 681.2
11	Dust Wiper	Rubber	AS 1646 & AS 681.1
12	Key	Carbon Steel	
13	Gland	Ductile Iron	AS 1831
14	HEX Bolt	Stainless Steel	ASTM A276
15	Washer	Stainless Steel	ASTM A276
16	Bonnet	Ductile Iron	AS 1831
17	Guide	Plastic	
18	Bearing	Roller Bearing	
19	Retainer	Brass	AS/NZS 1568



## Technical Requirements (DN750):

1. Face to Face Dimensions: AS 2638.2
2. Flanges Standard: AS 4087 PN16
3. Tests standard: AS 2638.2

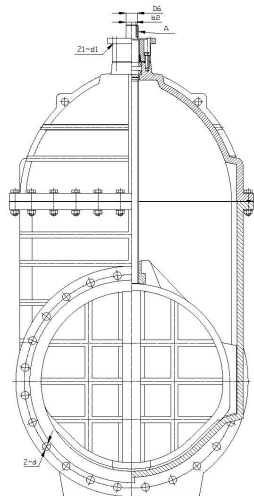
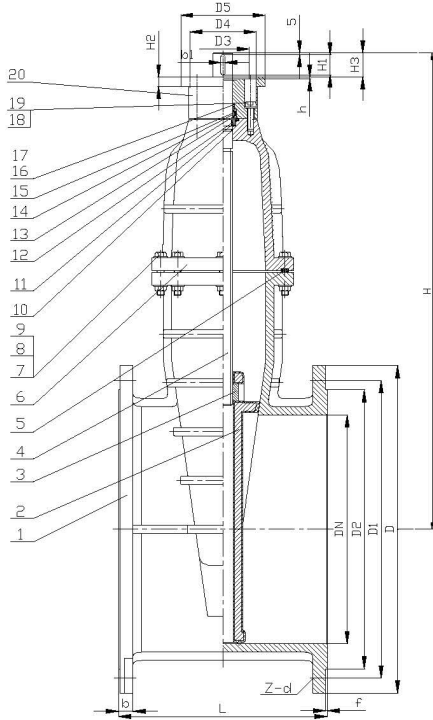
## Dimensions: unit mm

DN	L	H	ØB	ØD	ØK	n-Ød	C	f	Turns to close	Torque (N.M)	Weight (KG)
750	610	1582	888	995	927	20-Ø33	48	5	63	750	1400

## Top Flange (Gland) Standard ISO 5210

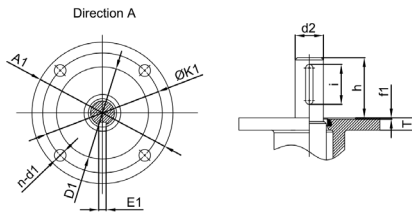
DN	ØA1	ØK1	ØD1	n-Ød1	E1	d2	i	h	f1	T
750	210	165	130	4-Ø23	14	50	62	88	6	25

# Resilient Seated Gate Valves - Flanged DN800-1200



## Part List

No	Parts Names	Material	Standard
1	Body	Ductile Iron	AS 1831
2	Wedge	Ductile Iron+ Vulcanised Rubber (Nylon Guide)	AS 1831+ AS 1646 & AS 681.1
3	Wedge Nut	Bronze	AS/NZS 1567
4	Stem	Stainless Steel	ASTM A276
5	Gasket	Rubber	AS 1646 & AS 681.1
6	Bonnet	Ductile Iron	AS 1831
7	Bonnet Bolt	Stainless Steel	ASTM A276
8	Nut	Stainless Steel	ASTM A276
9	Washer	Stainless Steel	ASTM A276
10	O-Ring	Rubber	AS 1646 & AS 681.1
11	Bearing	Component	
12	O-Ring	Rubber EPDM	AS 1646 & AS 681.1
13	O-Ring	Rubber EPDM	AS 1646 & AS 681.1
14	O-Ring	Rubber EPDM	AS 1646 & AS 681.1
15	Seal Ring	Brass	
16	Dust Ring	Rubber EPDM	AS 1646 & AS 681.1
17	Plug	Stainless Steel	ASTM A276
18	O-Ring	Rubber EPDM	AS 1646 & AS 681.1
19	Gland	Ductile Iron	AS 1831
20	Bolt	Stainless Steel	ASTM A276



## Dimensions: unit mm

DN	L	H	D	D1	D2	b	f	h	Z-d	D3	D4	D5	D6	b1	b2	H1	H2	Z1-d1
800	660	1588	1060	984	942	43	5	5	20-Ø36	Ø130	Ø165	Ø210	Ø50	10	46	50	60	4-Ø22
900	711	1745	1175	1092	1050	46.5	5	5	24-Ø36	Ø130	Ø165	Ø210	Ø50	10	46	50	60	4-Ø22
1000	811	1931	1255	1175	1133	50	5	5	24-Ø36	Ø200	Ø254	Ø300	Ø50	10	46	50	60	8-Ø18
1200	960	2277	1490	1410	1368	57	5	5	32-Ø36	Ø200	Ø254	Ø300	Ø70	16	65	70	80	8-Ø18

## Top Flange (Gland) Standard ISO 5210

DN	ØA1	ØK1	n-Ød1	E1	d2	f	T	m
800	300	254	8-Ø18	14	50	5	60	14
900	300	254	8-Ø18	14	50	5	60	14
1000	350	298	8-Ø22	20	70	5	60	20
1200	350	298	8-Ø22	20	70	5	60	20

# Pressure Rating & Installation

SUITABLE FOR POTABLE (BLUE), RECYCLED (LILAC) WATER AND WASTE WATER

Maximum Operating Pressure: 1600 KPA (PN35 Also available)  
Maximum Test Pressure: 2400 KPA

## Installation:

Suitable for above or below ground and shall be installed in accordance with the relevant regulatory codes and local authority requirements.

The system should be pressure tested before backfilling or concealment.

All valves should be checked prior to installation:

- Ensure wedge running freely and no obstructions.
- Large valves are often stored laying down, so freeing up of wedge through actuation should occur prior to installation.
- Check direction of close of valves prior to Installation.



## Derwent Industries Pty Ltd

ACN 096 997 152 ABN 48 096 997 152



**Melbourne:**  
17 Metcalf Drive  
Dandenong South, Vic 3175  
Ph: 61 - 3 - 9792 1509

**Sydney:**  
2 Ross Place  
Wetherill Park, NSW 2164  
Ph: 61 - 2 - 9136 0466

**Bendigo:**  
30-46 Powell Street  
Bendigo, Vic 3550  
Ph: 61 - 3 - 5443 8233

**Tasmania:**  
102 - 104 Sunderland St  
Derwent Park, Tas, 7009  
Ph: 61 - 3 - 6273 0729

**Wodonga:**  
60 Chapple Street  
Wodonga, Vic 3690  
Ph: 61 - 2 - 6014 0100

**Auckland:**  
Derwent Industries NZ Ltd  
36 Rangī Road  
Takanini, Auckland 2245  
Ph: 64 - 9 - 218 4959

Email: [sales@derwentindustries.com.au](mailto:sales@derwentindustries.com.au)

Web: [www.derwentindustries.com.au](http://www.derwentindustries.com.au)

NZ Email: [sales@derwentindustries.co.nz](mailto:sales@derwentindustries.co.nz)