

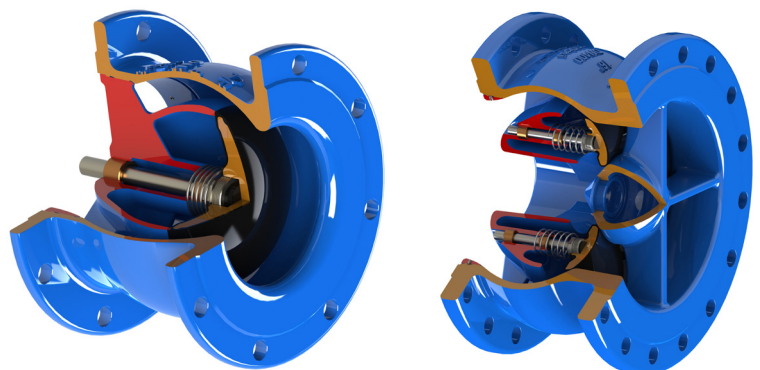
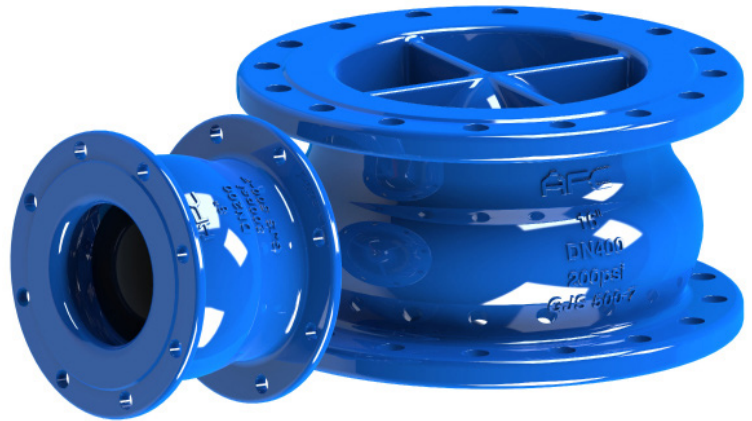
NSCV

NON SLAM CHECK VALVE

Non Slam Check Valves are used as protection against reverse flow, with faster disc return water hammer is reduced. The NSCV provides not only quieter performance but also reduced head loss.

FEATURES

- High strength ductile iron body used for durability and reduced weight.
- Advanced dynamic design, single body with diffuser, provides streamline flow and assures lower head loss.
- Reduced head loss and pumping power cost. Valve disc with shorter stroke and spring provides quick close solution.
- Fusion Bonded EPOXY Coated for corrosion resistance.
- Bronze bushing reduces wear during operation.
- Hydrodynamic design with spring ensures non slamming and reduced water hammer.
- Stainless steel spring is protected within the diffuser while valve in operation, preventing clogging.
- Disc will positively close before reverse flow, and maximize the closing speed up to 0.2 Sec.
- Installation can be vertical/horizontal/inclined. For sizes DN800 and above preferred vertical installation.
- Complies with EN 558-1 (face to face), ISO 5752, EN 1092-2, ISO 7005-2 and AS 4087 flange dimension.



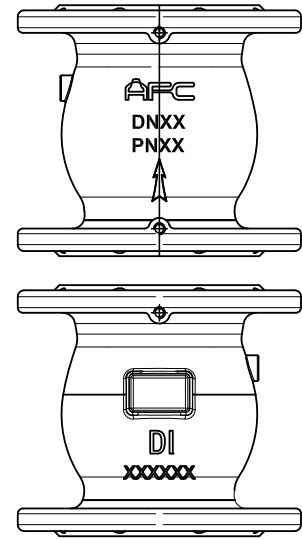
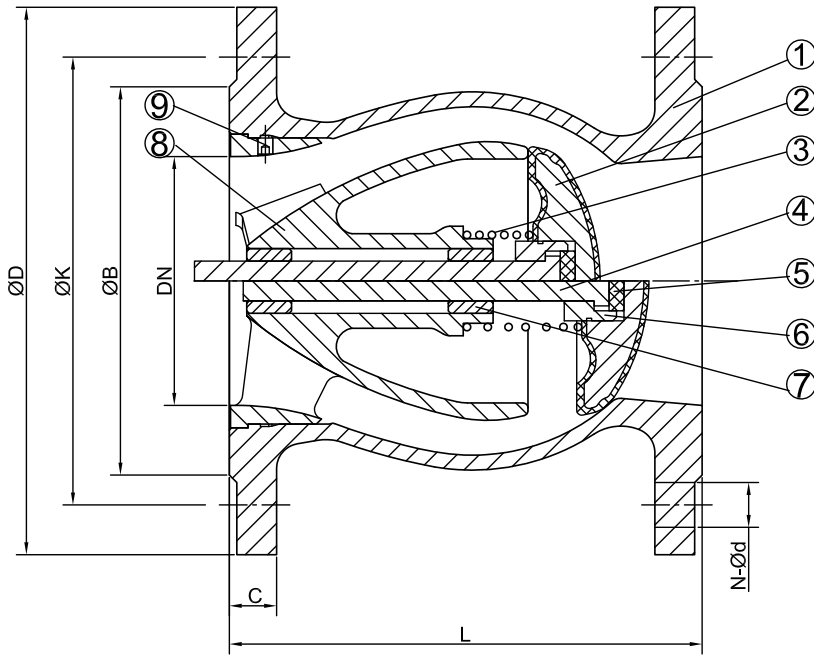
APPLICATIONS

The NSCV is primarily used for clean water, precleaned sewerage water, Fire Fighting, Irrigation, Cooling and HVAC Systems. For systems that require a faster disc return to reduce water hammer the NSCV provides an ideal solution.

TECHNICAL DATA

Size Range	DN50-1200mm
Pressure Ratings	1.0Mpa; 1.6Mpa; 2.5Mpa.
Working Temperature	-10°C - 80°C
End Connection	PN10, PN16, PN25.

NSCV - Non Slam Check Valve - 50-350



NO.	PART DESCRIPTION	MATERIAL	STANDARD REF
1	Body	Ductile Iron	GJS 500-7
2	Disc	Ductile Iron & Rubber	GJS 500-7 + EPDM
3	Spring	Stainless Steel	AISI 304
4	Stem	Stainless Steel	AISI 304
5	Washer	Rubber	EPDM
6	Washer	Stainless Steel	AISI 304
7	Bushing	Bronze	C61900
8	Diffuser	Ductile Iron	GJS 500-7
9	Set Screw	Stainless Steel	AISI 304

NOTE

1. Main valve Test:
1.1 Sealing test
Low pressure: 0.5bar;
High pressure:
1.1xPN;
1.2 Shell test
1.5xPN
2. Flange dimension according to order;
3. If need optional material or others, consult factory.

*316 available on request

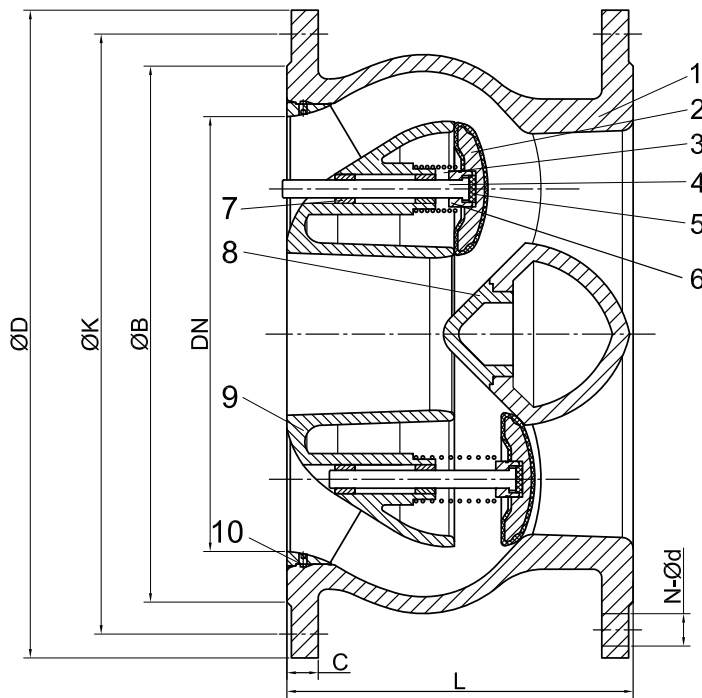
DIMENSION

DN	L	ØB	ØD	ØK	N-Ød	C
50	150	90	165	114	4-Ø18	19
65	170	103	185	127	4-Ø18	19
80	180	122	200	146	4-Ø18	19
100	190	154	220	178	4-Ø18	19
125	200	186	250	210	8-Ø18	19
150	210	211	285	235	8-Ø18	19
200	230	268	340	292	8-Ø18	20
250	250	328	405	356	8-Ø22	22
300	270	378	460	406	12-Ø22	24.5
350	290	438	520	470	12-Ø26	26.5

Non Slam Check Valve 50-350

DWG No.: SE-AFC-NFCV-50-350-TD-V1

NSCV - Non Slam Check Valve - 400-1000



NOTE

1. Main valve Test:
 - 1.1 Sealing test
Low pressure: 0.5bar;
High pressure: 1.1xPN;
 - 1.2 Shell test
1.5xPN + 1 bar
2. Flange dimension according to order;
3. If need optional material or others, consult factory.

NO.	PART DESCRIPTION	MATERIAL	STANDARD REF
1	Body	Ductile Iron	GJS 500-7
2	Disc	Ductile Iron & Rubber	GJS 500-7 + EPDM
3	Spring	Stainless Steel	AISI 304
4	Stem	Stainless Steel	AISI 304
5	Washer	Rubber	EPDM
6	Nut	Stainless Steel	AISI 304
7	Bushing	Bronze	C61900
8	Plug	Carboon Steel	GJS 500-7
9	Diffuser	Ductile Iron	GJS 500-7
10	Set Screw	Stainless Steel	AISI 304

*316 available on request

DIMENSION

DN	L	ØB	ØD	ØK	N-Ød	C
400	310	489	580	521	12-Ø26	28
450	330	532	640	584	12-Ø26	30
500	350	609	715	641	16-Ø26	31.5
600	390	720	840	756	16-Ø30	36
700	430	809	910	845	20-Ø30	39.5
800	470	942	1025	984	20-Ø36	43
900	510	1050	1125	1092	24-Ø36	46.5
1000	550	1133	1255	1175	24-Ø36	50

Non Slam Check Valve 400-1000

DWG No.: SE-AFC-NFCV-400-1000-TD-V1